

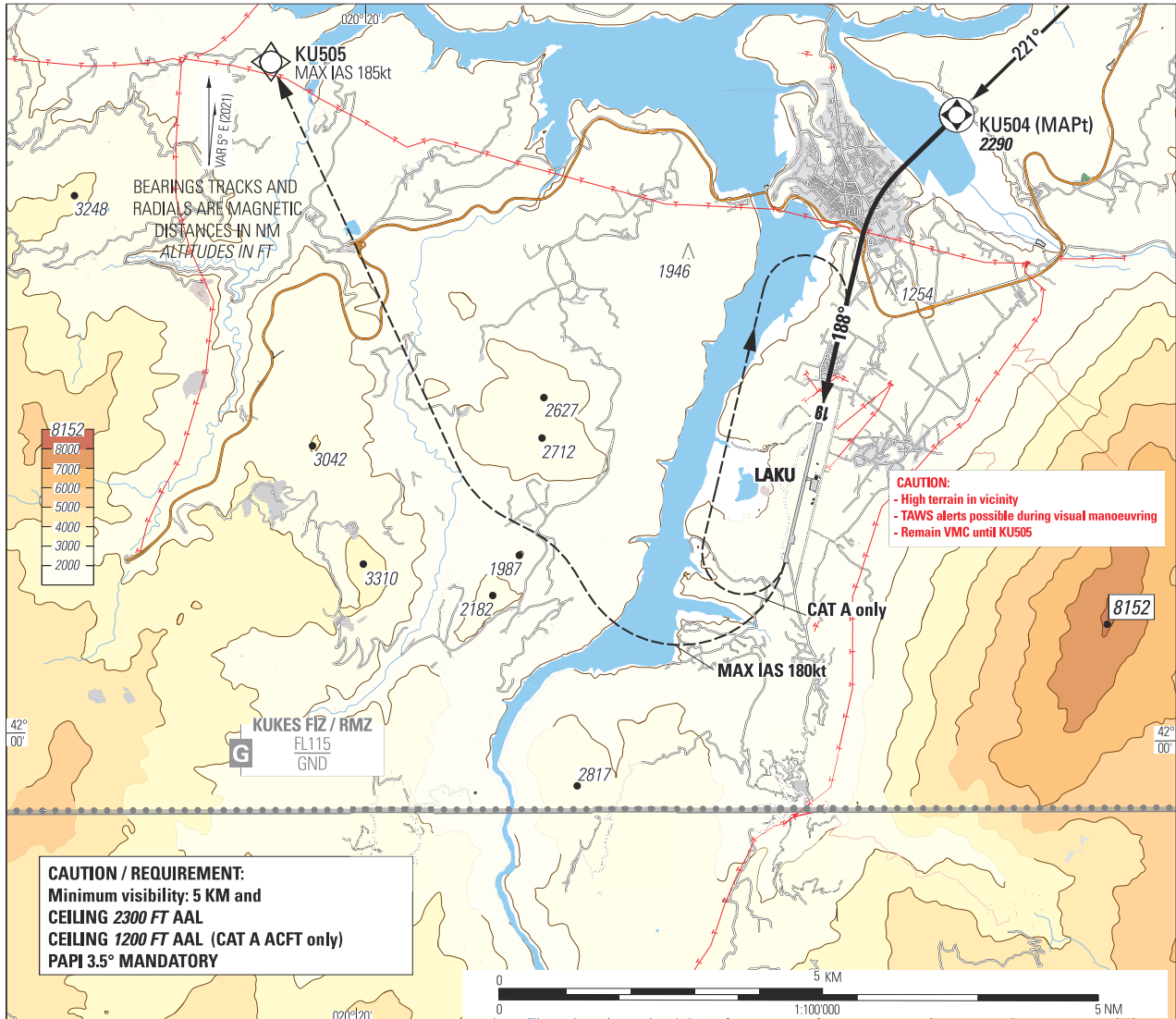
VISUAL APPROACH
PROCEDURE
CHART

AD ELEV 1160 FT

AERODROME INFORMATION

118.375
119.825

KUKES LAKU
RWY 19



CAUTION / REQUIREMENT:
Minimum visibility: 5 KM and
CEILING 2300 FT AAL
CEILING 1200 FT AAL (CAT A ACFT only)
PAPI 3.5° MANDATORY

Route description:

After KU504 proceed on visual segment to RWY19. Nominal descent path 3.5° from KU504 to touchdown.

In case of go-around during visual manoeuvring:

initiate climb and, no later than the end of the runway, turn right and proceed toward KU505, keeping visual separation to terrain. At KU505 join instrument missed approach procedure (see LAKU AD 2.24-9).

Optional (CAT A ACFT only): join RH visual downwind for a second attempt

THIS PAGE INTENTIONALLY LEFT BLANK