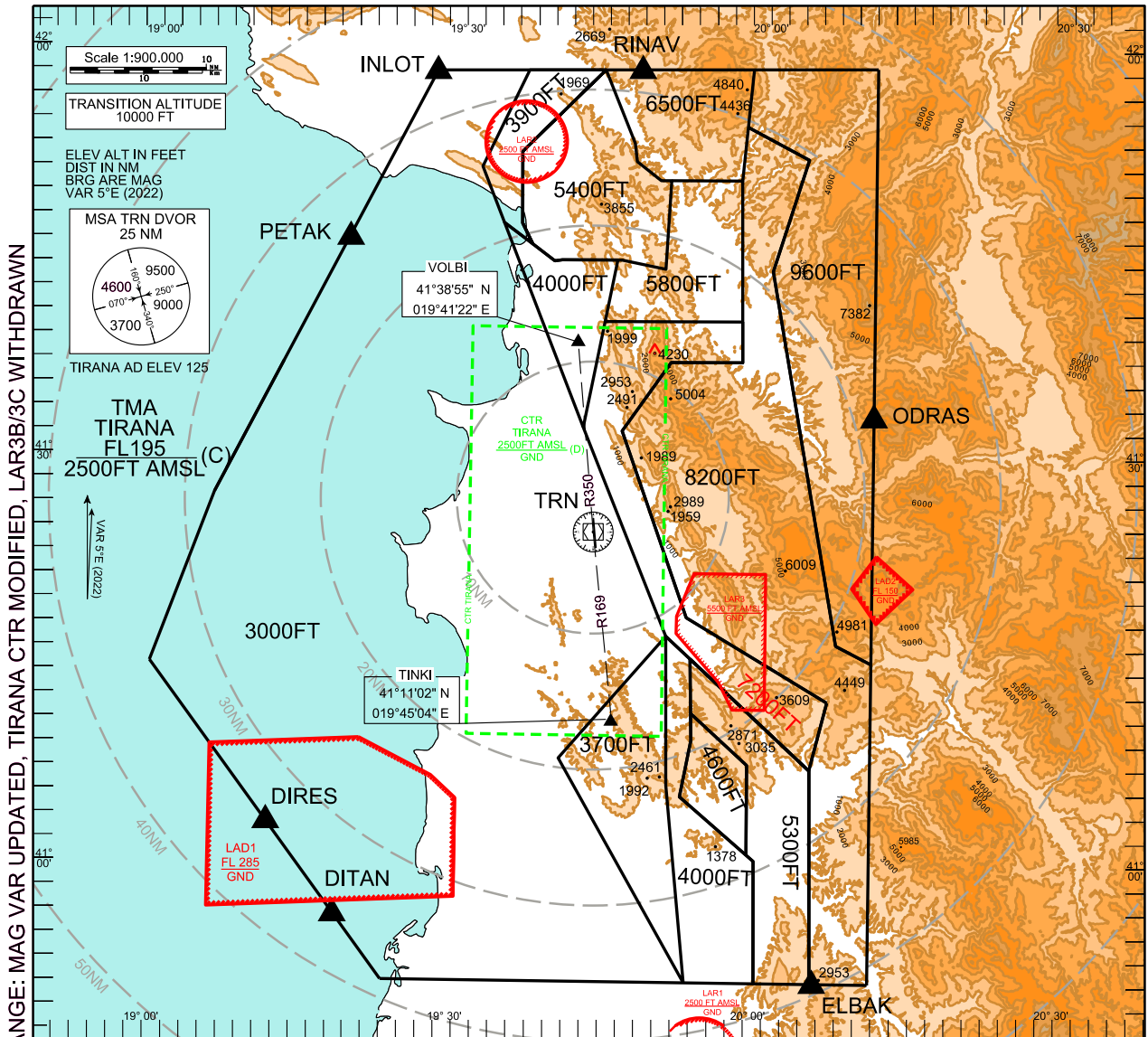


ATC SURVEILLANCE MINIMUM ALTITUDE CHART - ICAO

TWR	122.500	ATIS	132.275
	123.500	APP	133.150 136.350
ACC		127.500	136.350

TIRANA  
LATI



CHANGE: MAG VAR UPDATED, TIRANA CTR MODIFIED, LAR3B/3C WITHDRAWN

**GENERAL INFORMATION:**

- 1) The minimum vectoring altitudes within ATC Surveillance Minimum Altitude Area ensure terrain and obstacle clearance in conformity with ICAO Doc 8168 requirements. Corrections to the published minimum vectoring altitudes for low temperatures effect are applied, when necessary, by ATC.
- 2) Altitudes shown are based on QNH.
- 3) Only significant obstacles and dominant spot heights are shown.
- 4) This chart may only be used for cross-checking of altitudes assigned when in receipt of an ATC Surveillance service.

**MINIMUM INITIAL ALTITUDE:**  
Within the ATC Minimum Surveillance Altitude Area the minimum initial altitudes shown on the chart may be assigned by the approach surveillance controller while radar vectoring.  
Sectors defined by the lateral limits are shown on the next page.

**OUTSIDE THE DESIGNATED ATC SURVEILLANCE MINIMUM ALTITUDE AREA**  
ATC shall not at any time clear or vector aircraft below the published minimum en-route levels for aircraft operating outside the designated ATC Surveillance minimum Altitude Area.

**LOSS OF COMMUNICATION PROCEDURES**

**Initial Approach**  
Aircraft that are being vectored on base leg towards east and no instruction to turn onto the final approach track of the runway in use is received from ATC before intercepting respectively Radial 350 for Runway 17 and Radial 169 for Runway 35, shall turn to intercept the final approach track and execute the appropriate instrument approach procedure.

**Intermediate and final Approach**  
Continue visually or by means of an appropriate approved final approach aid. If not possible follow the DVOR/DME Missed Approach Procedure.

In all cases where the aircraft returns to the holding facility the procedure to be adopted is the basic radio failure procedure detailed at ENR 1.6.

<b>3000:</b>											
415847N	0192711E	-	415854N	0193611E	-	415145N	0193142E	-	414739N	0193355E	-
413240N	0194158E	-	411722N	0195019E	-	410819N	0194000E	-	405153N	0195227E	-
405151N	0192301E	-	411456N	0190008E	-	412409N	0190426E	-	412730N	0190600E	
<b>3700:</b>											
411722N	0195019E	-	410626N	0195031E	-	405153N	0195227E	-	410819N	0194000E	
<b>3900:</b>											
415854N	0193611E	-	415145N	0193142E	-	414739N	0193355E	-	414606N	0193645E	-
414736N	0193543E	-	415254N	0193537E	-	415859N	0194342E				
<b>4000 North:</b>											
413240N	0194158E	-	414028N	0194358E	-	414501N	0194508E	-	414458N	0193940E	-
414453N	0193856E	-	414606N	0193645E	-	414739N	0193355E				
<b>4000 South:</b>											
411722N	0195019E	-	411543N	0195243E	-	411142N	0195250E	-	410942N	0195253E	-
410534N	0195151E	-	410053N	0195905E	-	405152N	0195914E	-	405153N	0195227E	-
410626N	0195031E										
<b>4600:</b>											
411142N	0195250E	-	410942N	0195253E	-	410534N	0195151E	-	410120N	0195824E	-
410756N	0195821E										
<b>5300:</b>											
411543N	0195243E	-	410735N	0200425E	-	405151N	0200438E	-	405152N	0195914E	-
410053N	0195905E	-	410120N	0195824E	-	410756N	0195821E	-	411142N	0195250E	
<b>5400:</b>											
415859N	0194342E	-	415336N	0194640E	-	415216N	0194654E	-	415053N	0194918E	-
415054N	0195019E	-	414422N	0194952E	-	414500N	0194534E	-	414501N	0194508E	-
414458N	0193940E	-	414453N	0193855E	-	414606N	0193645E	-	414736N	0193543E	-
415254N	0193537E										
<b>5800:</b>											
414422N	0194952E	-	415054N	0195019E	-	415056N	0195718E	-	414034N	0195728E	-
414028N	0194358E	-	414501N	0194508E	-	414500N	0194534E				
<b>6500:</b>											
415054N	0195019E	-	415056N	0195718E	-	415453N	0195748E	-	415908N	0195820E	-
415859N	0194342E	-	415336N	0194640E	-	415216N	0194654E	-	415053N	0194918E	
<b>7200:</b>											
414028N	0194358E	-	414034N	0195728E	-	413734N	0195731E	-	413731N	0195030E	-
413226N	0194547E	-	411845N	0195217E	-	411235N	0200605E	-	410735N	0200425E	-
411543N	0195243E	-	411722N	0195019E	-	413240N	0194158E				
<b>8200:</b>											
415056N	0195718E	-	415453N	0195748E	-	415231N	0200351E	-	414417N	0200025E	-
411646N	0200654E	-	411526N	0201022E	-	405150N	0201014E	-	405151N	0200438E	-
410735N	0200425E	-	411235N	0200605E	-	411845N	0195217E	-	413226N	0194547E	-
413731N	0195030E	-	413734N	0195731E	-	414034N	0195728E				
<b>9600:</b>											
415908N	0195820E	-	415453N	0195748E	-	415231N	0200351E	-	414417N	0200025E	-
411646N	0200654E	-	411526N	0201022E	-	415914N	0201035E				