

STANDARD ARRIVAL CHART -
INSTRUMENT (STAR) - ICAO

AD ELEV 125 FT

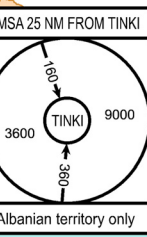
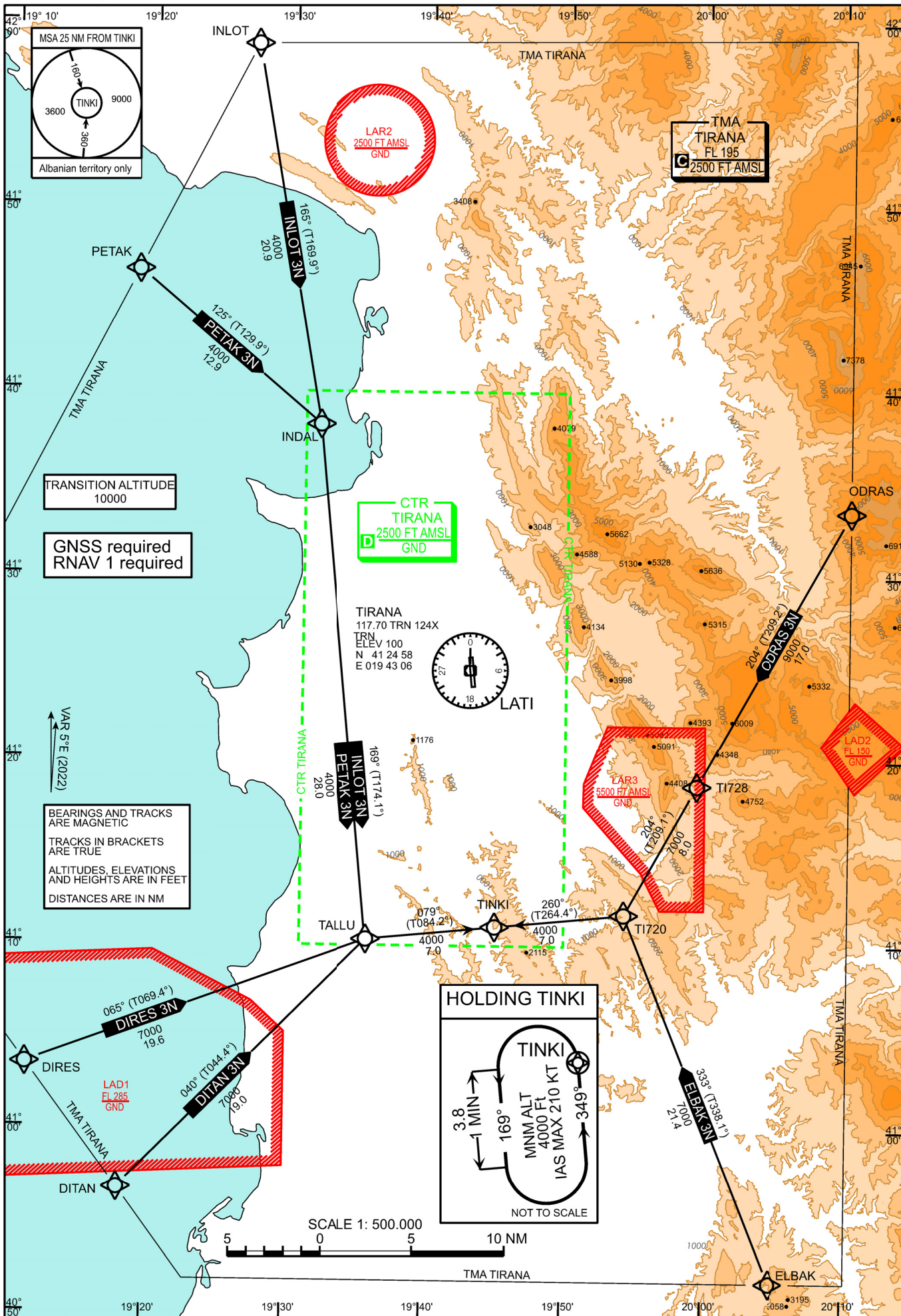
VAR 5°E

RADAR	133.150	127.500
		136.350
TOWER	122.500	123.500
ATIS		132.275

TIRANA, LATI
RNAV STAR RWY 35
ALBANIA

DOC 8168 VOL II - ED.7 - 2020

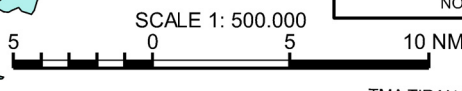
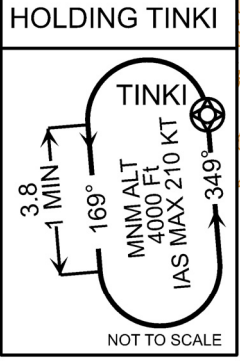
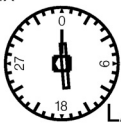
CHANGES: NEW HOLDING OVER TINKI IMPLEMENTED. ALL STARS UPDATED. MSA UPDATED.



TRANSITION ALTITUDE
10000

GNSS required
RNAV 1 required

BEARINGS AND TRACKS
ARE MAGNETIC
TRACKS IN BRACKETS
ARE TRUE
ALTITUDES, ELEVATIONS
AND HEIGHTS ARE IN FEET
DISTANCES ARE IN NM



Designator		Route						Remarks		
DIRES 3N Dires three november arrival		DIRES – TALLU – TINKI								
RNAV STAR Coding Table of DIRES 3N										
Path Terminator	Waypoint			Course/ Track ° MAG (° True)	DIST NM	Turn Direction	Constraints		Navigation Specification	Remarks
	Identifier	Flyover	Coordinates				Crossing ALT	Speed		
IF	DIRES	no	N410328.00 E0191133.00				F120+		RNAV 1	
TF	TALLU	no	N411020.00 E0193551.00	065° (069.4°)	19.6		A7000+		RNAV 1	
TF	TINKI	no	N411102.00 E0194504.00	079° (084.2°)	7.0	right	A4000+		RNAV 1	

Designator		Route						Remarks		
DITAN 3N Ditan three november arrival		DITAN – TALLU – TINKI								
RNAV STAR Coding Table of DITAN 2N										
Path Terminator	Waypoint			Course/ Track ° MAG (° True)	DIST NM	Turn Direction	Constraints		Navigation Specification	Remarks
	Identifier	Flyover	Coordinates				Crossing ALT	Speed		
IF	DITAN	no	N405644.00 E0191813.00				F120+		RNAV 1	
TF	TALLU	no	N411020.00 E0193551.00	040° (044.4°)	19.0		A7000+		RNAV 1	
TF	TINKI	no	N411102.00 E0194504.00	079° (084.2°)	7.0	right	A4000+		RNAV 1	

Designator		Route						Remarks		
ELBAK 3N Elbak three november arrival		ELBAK – TI720 – TINKI								
RNAV STAR Coding Table of ELBAK 3N										
Path Terminator	Waypoint			Course/ Track ° MAG (° True)	DIST NM	Turn Direction	Constraints		Navigation Specification	Remarks
	Identifier	Flyover	Coordinates				Crossing ALT	Speed		
IF	ELBAK	no	N405151.00 E0200452.00				F120+		RNAV 1	
TF	TI720	no	N411143.26 E0195417.19	333° (338.1°)	21.4		A7000+		RNAV 1	
TF	TINKI	no	N411102.00 E0194504.00	260° (264.4°)	7.0	left	A4000+		RNAV 1	

Path Terminator	Identifier	Inbound Course °M (°T)	Leg Distance (NM) ⁽¹⁾	Timing (min.)/ Waypoint Distance ⁽²⁾	Turn Direction	Minimum Altitude (FT)	Maximum Altitude (FL)	Speed Limit (kt)	Magnetic Variation (°)	Navigation Specification
HOLD HM	TINKI	349° (354.3°)	3.8	1 min	Left	+4000		210	4.9	RNAV1

Designator		Route						Remarks		
INLOT 3N Inlot three november arrival		INLOT – INDAL – TALLU – TINKI								
RNAV STAR Coding Table of INLOT 3N										
Path Terminator	Waypoint			Course/ Track ° MAG (° True)	DIST NM	Turn Direction	Constraints		Navigation Specification	Remarks
	Identifier	Flyover	Coordinates				Crossing ALT	Speed		
IF	INLOT	no	N415847.00 E0192711.00				F120+		RNAV 1	
TF	INDAL	no	N413813.00 E0193204.00	165° (169.9°)	20.9		A4000+		RNAV 1	
TF	TALLU	no	N411020.00 E0193551.00	169° (174.1°)	28.0	right	A4000+		RNAV 1	
TF	TINKI	no	N411102.00 E0194504.00	079° (084.2°)	7.0	left	A4000+		RNAV 1	

Designator		Route						Remarks		
ODRAS 3N Odras three november arrival		ODRAS – TI728 – TI720 – TINKI								
RNAV STAR Coding Table of ODRAS 3N										
Path Terminator	Waypoint			Course/ Track ° MAG (° True)	DIST NM	Turn Direction	Constraints		Navigation Specification	Remarks
	Identifier	Flyover	Coordinates				Crossing ALT	Speed		
IF	ODRAS	no	N413335.00 E0201027.00				F140+		RNAV 1	
TF	TI728	no	N411843.10 E0195926.23	204° (209.2°)	17.0		A9000+		RNAV 1	
TF	TI720	no	N411143.26 E0195417.19	204° (209.1°)	8.0		A7000+		RNAV 1	
TF	TINKI	no	N411102.00 E0194504.00	260° (264.4°)	7.0	right	A4000+		RNAV 1	

Designator		Route						Remarks		
PETAK 3N Petak three november arrival		PETAK – INDAL – TALLU – TINKI								
RNAV STAR Coding Table of PETAK 3N										
Path Terminator	Waypoint			Course/ Track ° MAG (° True)	DIST NM	Turn Direction	Constraints		Navigation Specification	Remarks
	Identifier	Flyover	Coordinates				Crossing ALT	Speed		
IF	PETAK	no	N414631.00 E0191850.00				F120+		RNAV 1	
TF	INDAL	no	N413813.00 E0193204.00	125° (129.9°)	12.9		A4000+		RNAV 1	
TF	TALLU	no	N411020.00 E0193551.00	169° (174.1°)	28.0	right	A4000+		RNAV 1	
TF	TINKI	no	N411102.00 E0194504.00	079° (084.2°)	7.0	left	A4000+		RNAV 1	