

STANDARD DEPARTURE CHART -
INSTRUMENT (SID) - ICAO

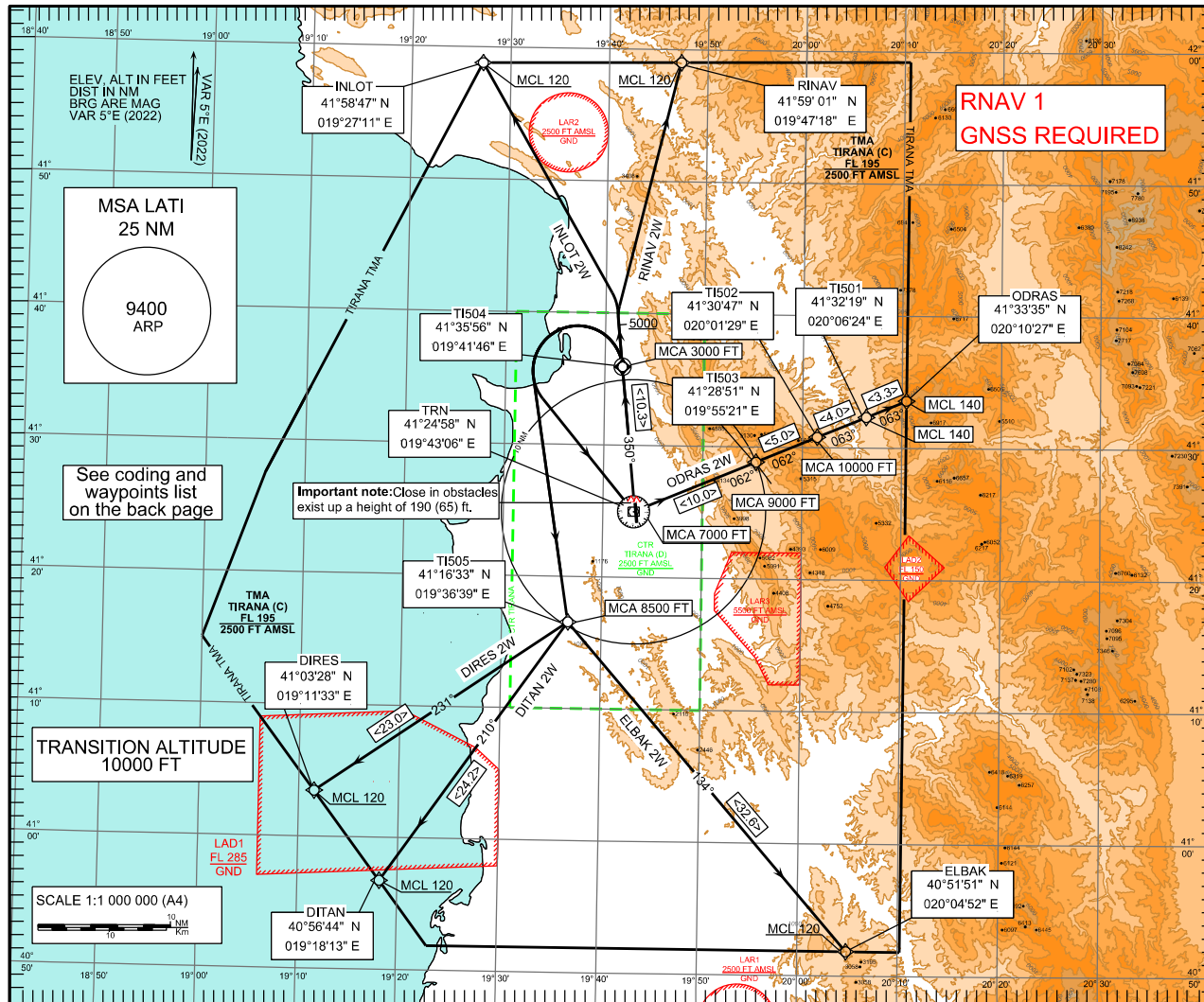
AERODROME ELEVATION 125 FT
HEIGHTS RELATED TO
THR 35 ELEV 125 FT

TWR	122.500	APP	133.150	ACC	127.500	ATIS	
	123.500		136.350		136.350	132.275	

TIRANA, LATI
RNAV SID
RWY35

DOC.8168 VOL II - ED.7 - 2020

CHANGE: REMARK ON CLOSE IN OBSTACLE UPDATED



ELBAK 2W

After take-off climb on course 350° to TI504 at or above 3000 ft, turn LEFT DCT TI505 above 8500 ft, then continue on track 134° to ELBAK at or above FL120.

Minimum climb gradient 4.6% (280 ft/NM) until TI504.

DITAN 2W

After take-off climb on course 350° to TI504 at or above 3000 ft, turn LEFT DCT TI505 above 8500 ft, then continue on track 210° to DITAN at or above FL120.

Minimum climb gradient 4.6% (280 ft/NM) until TI504.

INLOT 2W

After take-off climb on course 350° until 5000 ft, then turn LEFT DCT INLOT at or above FL120.

Minimum climb gradient 5.5% (335 ft/NM) until INLOT.

DIRES 2W

After take-off climb on course 350° to TI504 at or above 3000 ft, turn LEFT DCT TI505 above 8500 ft, then continue on track 231° to DIRES at or above FL120.

Minimum climb gradient 4.6% (280 ft/NM) until TI504.

RINAV 2W

After take-off climb on course 350° until 5000 ft, then turn RIGHT DCT RINAV at or above FL120.

Minimum climb gradient 5.8% (353 ft/NM) until RINAV.

ODRAS 2W

After take-off climb on course 350° to TI504 at or above 3000 ft, turn LEFT DCT TRN above 7000 ft, then proceed via TI503 above 9000 ft - TI502 above 10000 ft - TI501 - ODRAS at or above FL140.

Minimum climb gradient 5.0% (304 ft/NM) until TI503.

RNAV SID RWY 35
TABULAR DESCRIPTION

Serial Number	P&T	Waypoint Name	FO	Track M°	Distance (NM)	Turn Direction	MCA/MCL	Speed Limit (KT)	Navigation Specification
ELBAK 2W									
010	CF	TI504	Y	350	10.3	-	+3000	-	RNAV 1
020	DF	TI505	-	-	-	L	+8500	-	RNAV 1
030	TF	ELBAK	-	134	32.6	-	+FL120	-	RNAV 1
DITAN 2W									
010	CF	TI504	Y	350	10.3	-	+3000	-	RNAV 1
020	DF	TI505	-	-	-	L	+8500	-	RNAV 1
030	TF	DITAN	-	210	24.2	R	+FL120	-	RNAV 1
INLOT 2W									
010	CA	-	-	350	-	-	+5000	-	RNAV 1
020	DF	INLOT	-	-	-	L	+FL120	-	RNAV 1
DIRES 2W									
010	CF	TI504	Y	350	10.3	-	+3000	-	RNAV 1
020	DF	TI505	-	-	-	L	+8500	-	RNAV 1
030	TF	DIRES	-	231	23.0	R	+FL120	-	RNAV 1
RINAV 2W									
010	CA	-	-	350	-	-	+5000	-	RNAV 1
020	DF	RINAV	-	-	-	R	+FL120	-	RNAV 1
ODRAS 2W									
010	CF	TI504	Y	350	10.3	-	+3000	-	RNAV 1
020	DF	TRN	-	-	-	L	+7000	-	RNAV 1
030	TF	TI503	-	062	10.0	-	+9000	-	RNAV 1
040	TF	TI502	-	062	5.0	-	+10000	-	RNAV 1
050	TF	TI501	-	063	4.0	-	+FL140	-	RNAV 1
060	TF	ODRAS	-	063	3.3	-	+FL140	-	RNAV 1

WAYPOINTS LIST

Waypoint Name	Coordinates
DIRES	410328N 0191133E
DITAN	405644N 0191813E
ELBAK	405151N 0200452E
INLOT	415847N 0192711E
ODRAS	413335N 0201027E
RINAV	415901N 0194718E
TI501	413219N 0200624E
TI502	413047N 0200129E
TI503	412851N 0195521E
TI504	413556N 0194146E
TI505	411633N 0193639E
TRN	412458N 0194306E