

AERODROME GROUND  
MOVEMENT CHART - ICAO

MAIN APRON ELEV 113 FT  
NORTH APRON ELEV 103 FT

TOWER	122.500	APP	133.150	ATIS	132.275	TIRANA
	136.250		136.350			LATI

ELEVATIONS ARE IN FEET  
DIMENSIONS ARE IN METRES  
LATITUDE AND LONGITUDE  
ARE IN WGS 84

VAR 5° E (2022)  
ANNUAL RATE  
OF CHANGE 0.1° E

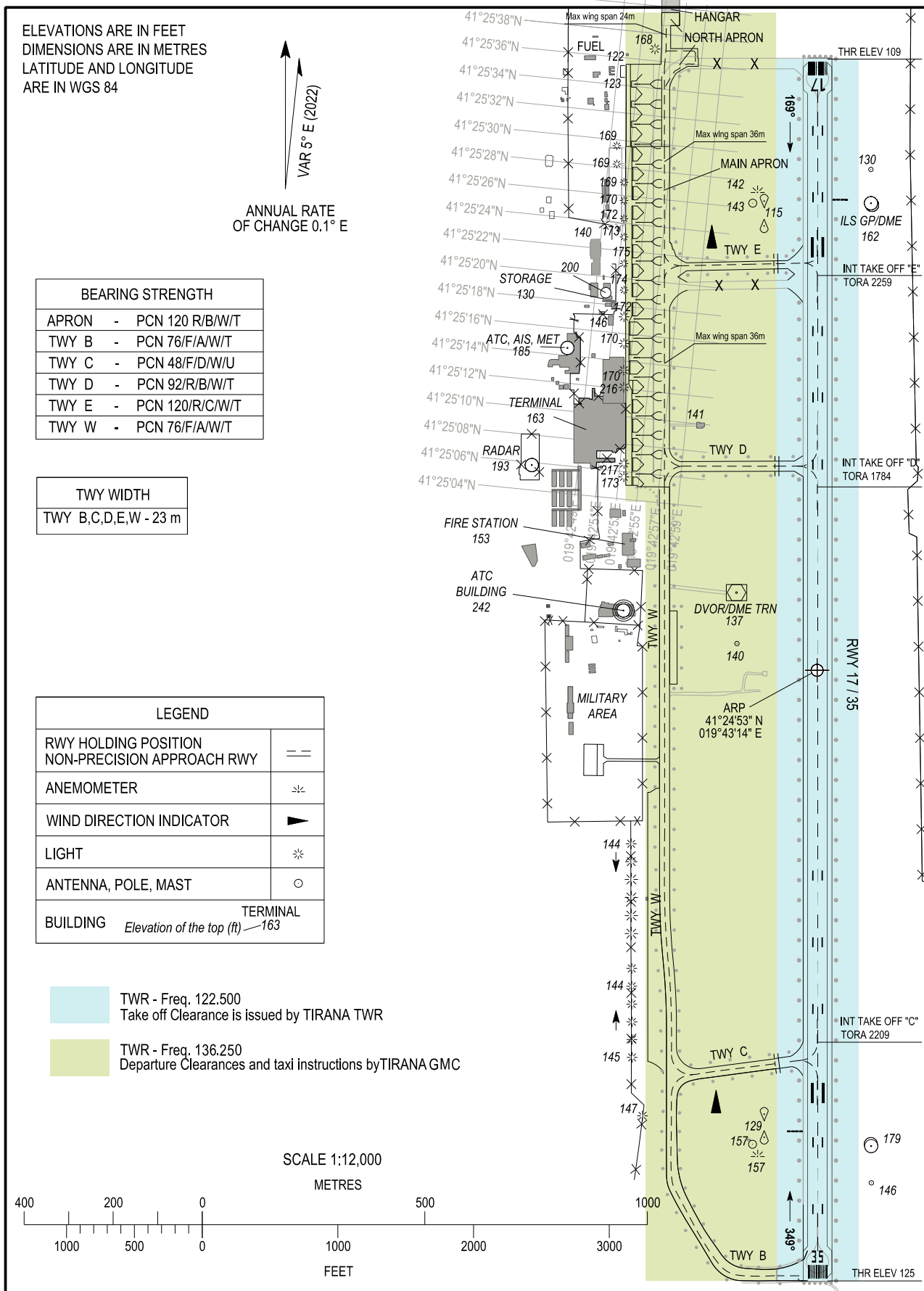
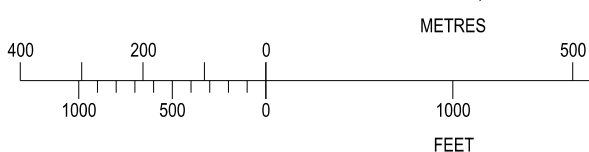
BEARING STRENGTH	
APRON	- PCN 120 R/B/W/T
TWY B	- PCN 76/F/A/W/T
TWY C	- PCN 48/F/D/W/U
TWY D	- PCN 92/R/B/W/T
TWY E	- PCN 120/R/C/W/T
TWY W	- PCN 76/F/A/W/T

TWY WIDTH	
TWY B,C,D,E,W	- 23 m

LEGEND	
RWY HOLDING POSITION	==
NON-PRECISION APPROACH RWY	==
ANEMOMETER	⊛
WIND DIRECTION INDICATOR	▶
LIGHT	*
ANTENNA, POLE, MAST	○
BUILDING	TERMINAL Elevation of the top (ft) — 163

- TWR - Freq. 122.500  
Take off Clearance is issued by TIRANA TWR
- TWR - Freq. 136.250  
Departure Clearances and taxi instructions by TIRANA GMC

SCALE 1:12,000



THIS PAGE INTENTIONALLY LEFT BLANK