

STANDARD ARRIVAL CHART -
INSTRUMENT (STAR) - ICAO

AD ELEV 125 FT

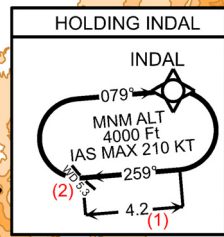
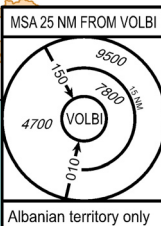
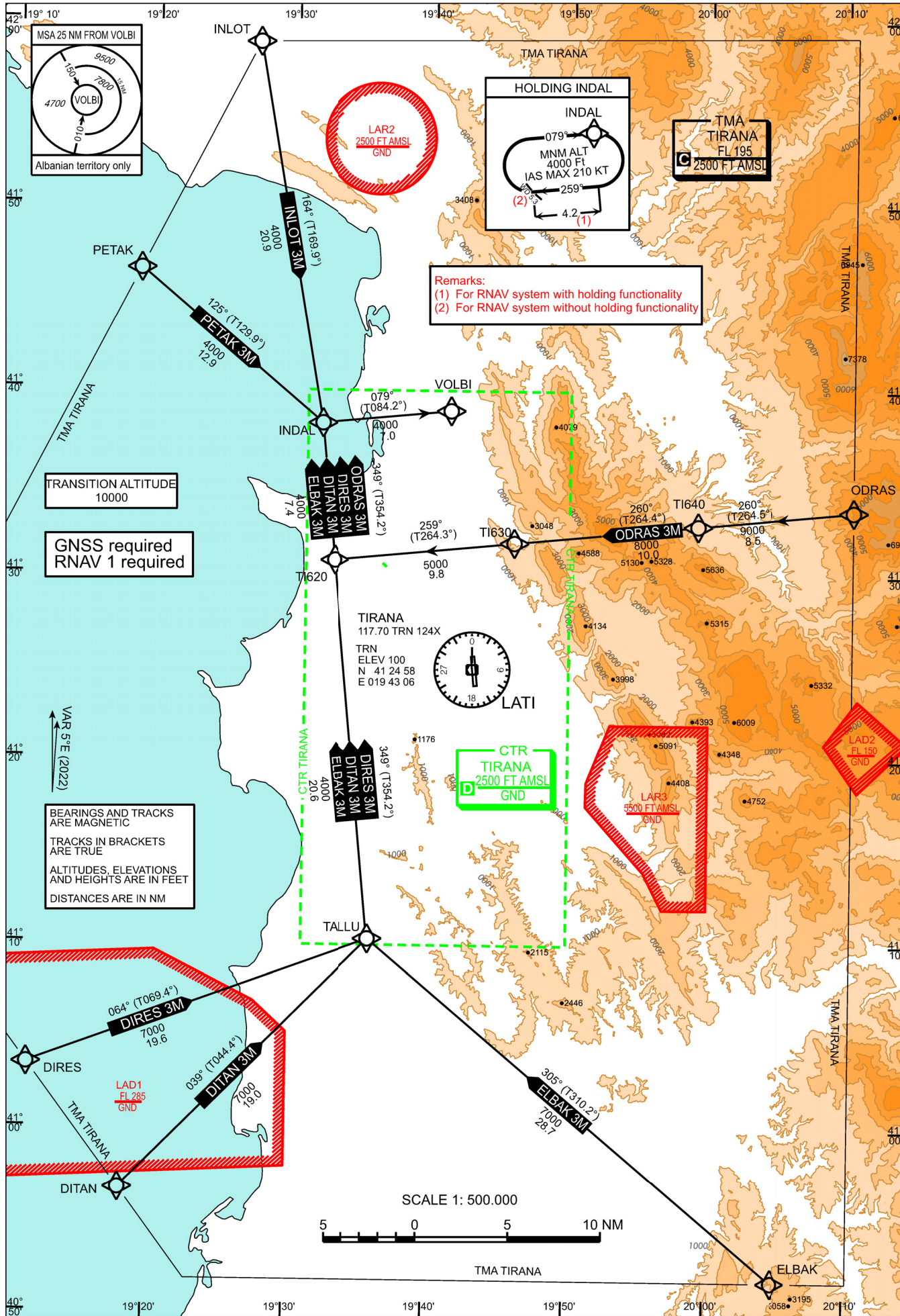
VAR 5° E

RADAR	133.150	127.500
TOWER	122.500	123.500
ATIS	132.275	

TIRANA, LATI
RNAV STAR Rwy 17
ALBANIA

DOC 8168 VOL II - ED.7 - 2020

CHANGE: ODRAS 3M MODIFIED. NEW HOLDING OVER INDAL IMPLEMENTED. ALL STARS UPDATED. MSA UPDATED.

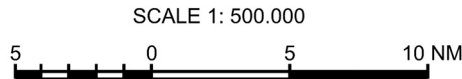
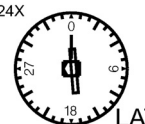


Remarks:
(1) For RNAV system with holding functionality
(2) For RNAV system without holding functionality

TRANSITION ALTITUDE
10000

GNSS required
RNAV 1 required

BEARINGS AND TRACKS
ARE MAGNETIC
TRACKS IN BRACKETS
ARE TRUE
ALTITUDES, ELEVATIONS
AND HEIGHTS ARE IN FEET
DISTANCES ARE IN NM



Designator	Route	Remarks
DIRES 3M Dires three mike arrival	DIRES – TALLU – TI620 - INDAL – VOLBI	

RNAV STAR Coding Table of DIRES 3M

Path Terminator	Waypoint			Course/Track ° MAG (° True)	DIST NM	Turn Direction	Constraints		Navigation Specification	Remarks
	Identifier	Flyover	Coordinates				Crossing ALT	Speed		
IF	DIRES	no	N410328.00 E0191133.00					F120+	RNAV 1	
TF	TALLU	no	N411020.00 E0193551.00	064° (069.4°)	19.6			A7000+	RNAV 1	
TF	TI620	no	N413048.73 E0193304.60	349 (354.2)	20.6	left		A4000+	RNAV 1	
TF	INDAL	no	N413813.00 E0193204.00	349° (354.2°)	7.4			A4000+	RNAV 1	
TF	VOLBI	no	N413855.00 E0194122.00	079° (084.2°)	7.0	right		A4000+	RNAV 1	

Designator	Route	Remarks
DITAN 3M Ditan three mike arrival	DITAN – TALLU – TI620 - INDAL – VOLBI	

RNAV STAR Coding Table of DITAN 3M

Path Terminator	Waypoint			Course/Track ° MAG (° True)	DIST NM	Turn Direction	Constraints		Navigation Specification	Remarks
	Identifier	Flyover	Coordinates				Crossing ALT	Speed		
IF	DITAN	no	N405644.00 E0191813.00					F120+	RNAV 1	
TF	TALLU	no	N411020.00 E0193551.00	039° (044.4°)	19.0			A7000+	RNAV 1	
TF	TI620	no	N413048.73 E0193304.60	349 (354.2)	20.6	left		A4000+	RNAV 1	
TF	INDAL	no	N413813.00 E0193204.00	349° (354.2°)	7.4			A4000+	RNAV 1	
TF	VOLBI	no	N413855.00 E0194122.00	079° (084.2°)	7.0	right		A4000+	RNAV 1	

Designator	Route	Remarks
ELBAK 3M Elbak three mike arrival	ELBAK – TALLU – TI620 - INDAL – VOLBI	

RNAV STAR Coding Table of ELBAK 3M

Path Terminator	Waypoint			Course/Track ° MAG (° True)	DIST NM	Turn Direction	Constraints		Navigation Specification	Remarks
	Identifier	Flyover	Coordinates				Crossing ALT	Speed		
IF	ELBAK	no	N405151.00 E0200452.00					F120+	RNAV 1	
TF	TALLU	no	N411020.00 E0193551.00	305° (310.2°)	28.7			A7000+	RNAV 1	
TF	TI620	no	N413048.73 E0193304.60	349 (354.2)	20.6	right		A4000+	RNAV 1	
TF	INDAL	no	N413813.00 E0193204.00	349° (354.2°)	7.4			A4000+	RNAV 1	
TF	VOLBI	no	N413855.00 E0194122.00	079° (084.2°)	7.0	right		A4000+	RNAV 1	

Designator	Route	Remarks
INLOT 3M Inlot three mike arrival	INLOT – INDAL – VOLBI	

RNAV STAR Coding Table of INLOT 3M

Path Terminator	Waypoint			Course/Track ° MAG (° True)	DIST NM	Turn Direction	Constraints		Navigation Specification	Remarks
	Identifier	Flyover	Coordinates				Crossing ALT	Speed		
IF	INLOT	no	N415847.00 E0192711.00					F120+	RNAV 1	
TF	INDAL	no	N413813.00 E0193204.00	164° (169.9°)	20.9			A4000+	RNAV 1	
TF	VOLBI	no	N413855.00 E0194122.00	079° (084.2°)	7.0	left		A4000+	RNAV 1	

Designator	Route	Remarks
ODRAS 3M Odras three mike arrival	ODRAS – TI640 – TI630 – TI620 – INDAL – VOLBI	

RNAV STAR Coding Table of ODRAS 3M

Path Terminator	Waypoint			Course/Track ° MAG (° True)	DIST NM	Turn Direction	Constraints		Navigation Specification	Remarks
	Identifier	Flyover	Coordinates				Crossing ALT	Speed		
IF	ODRAS	no	N413335.00 E0201027.00					F140+	RNAV 1	
TF	TI640	no	N413246.33 E0195913.02	260° (264.5°)	8.5			A9000+	RNAV 1	
TF	TI630	no	N413147.72 E0194601.25	260° (264.4°)	10.0			A8000+	RNAV 1	
TF	TI620	no	N413048.73 E0193304.60	259° (264.3°)	9.8			A5000+	RNAV 1	
TF	INDAL	no	N413813.00 E0193204.00	349° (354.2°)	7.4	right		A4000+	RNAV 1	
TF	VOLBI	no	N413855.00 E0194122.00	079° (084.2°)	7.0	right		A4000+	RNAV 1	

Designator	Route	Remarks
PETAK 3M Petak three mike arrival	PETAK – INDAL – VOLBI	

RNAV STAR Coding Table of PETAK 3M

Path Terminator	Waypoint			Course/Track ° MAG (° True)	DIST NM	Turn Direction	Constraints		Navigation Specification	Remarks
	Identifier	Flyover	Coordinates				Crossing ALT	Speed		
IF	PETAK	no	N414631.00 E0191850.00					F120+	RNAV 1	
TF	INDAL	no	N413813.00 E0193204.00	125° (129.9°)	12.9			A4000+	RNAV 1	
TF	VOLBI	no	N413855.00 E0194122.00	079° (084.2°)	7.0	left		A4000+	RNAV 1	

Path Terminator	Identifier	Inbound Course °M (°T)	Leg Distance (NM) ⁽¹⁾	Timing min./Waypoint Distance ⁽²⁾	Turn Direction	Minimum Altitude (FT)	Maximum Altitude (FL)	Speed Limit (kt)	Magnetic Variation (°)	Navigation Specification
HOLD HM	INDAL	079° (084.2°)	4.2	-/5.3	Right	+4000		210	4.9	RNAV1

Remarks:
 (1) For RNAV system with holding functionality
 (2) For RNAV system without holding functionality